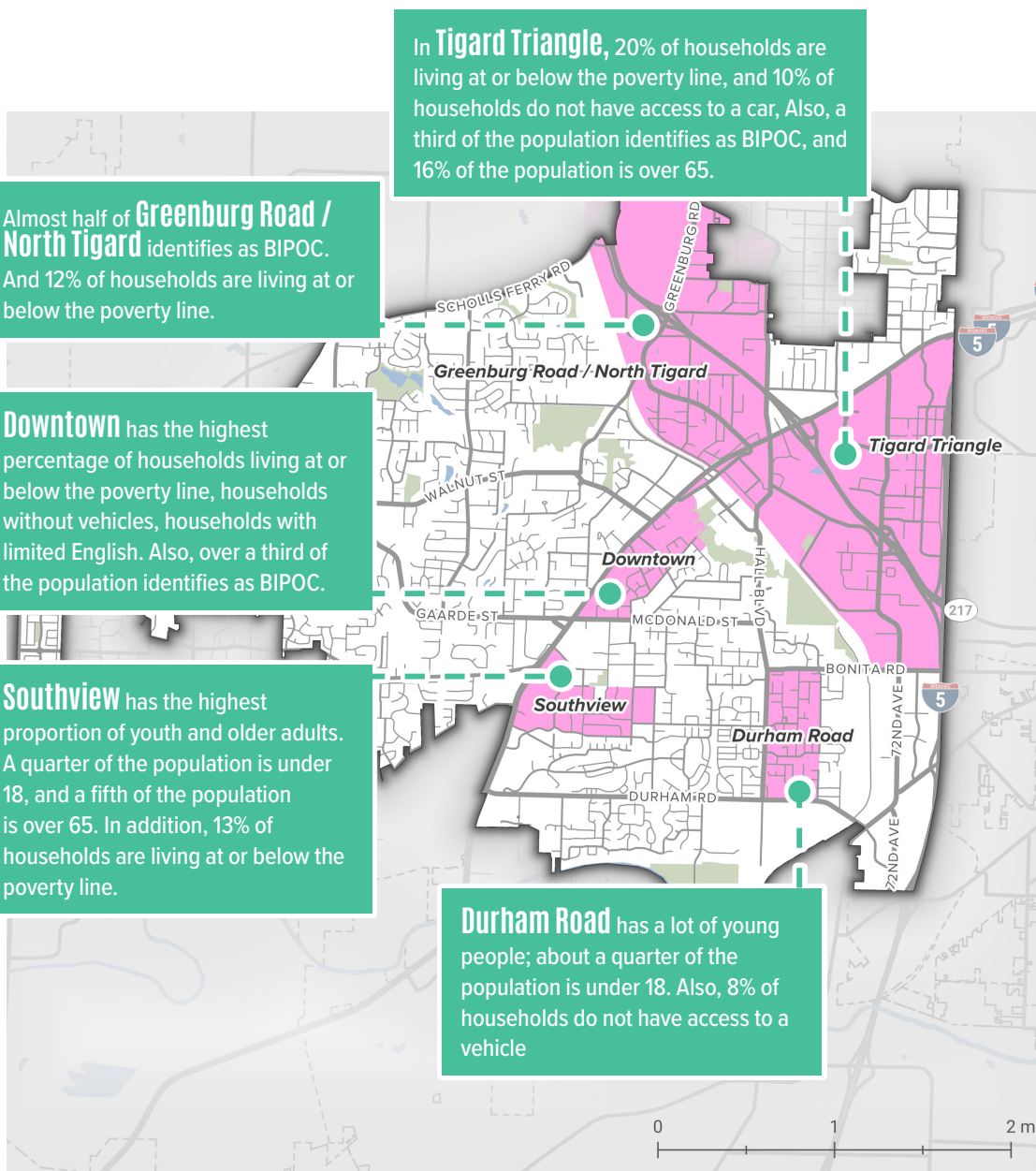


High Equity Need Areas



Equity and safety to go hand in hand. People can face different risks when traveling in Tigard depending on their identities.

Traffic fatalities disproportionately impact Black, Indigenous, and People of Color (BIPOC). People who are young, old, have low incomes, or experience houselessness are also disproportionately impacted. The neighborhoods highlighted on this map are places where these groups of people are concentrated. Focusing safety improvements in these areas is an important step towards reducing inequities across the transportation system.



CITYWIDE STATS

20%
OF TIGARD'S POPULATION IS UNDER 18

16%
OF TIGARD'S POPULATION IS OVER 64

30%
OF TIGARD'S POPULATION IS BIPOC

3%
OF TIGARD'S HOUSEHOLDS SPEAK LIMITED ENGLISH

5%
OF TIGARD'S HOUSEHOLDS HAVE NO VEHICLE

11%
OF TIGARD'S POPULATION HAVE A DISABILITY

High Equity Need Area
 City Limit
 Park

High equity need areas were identified through multiple tools at the federal, regional, and city level.