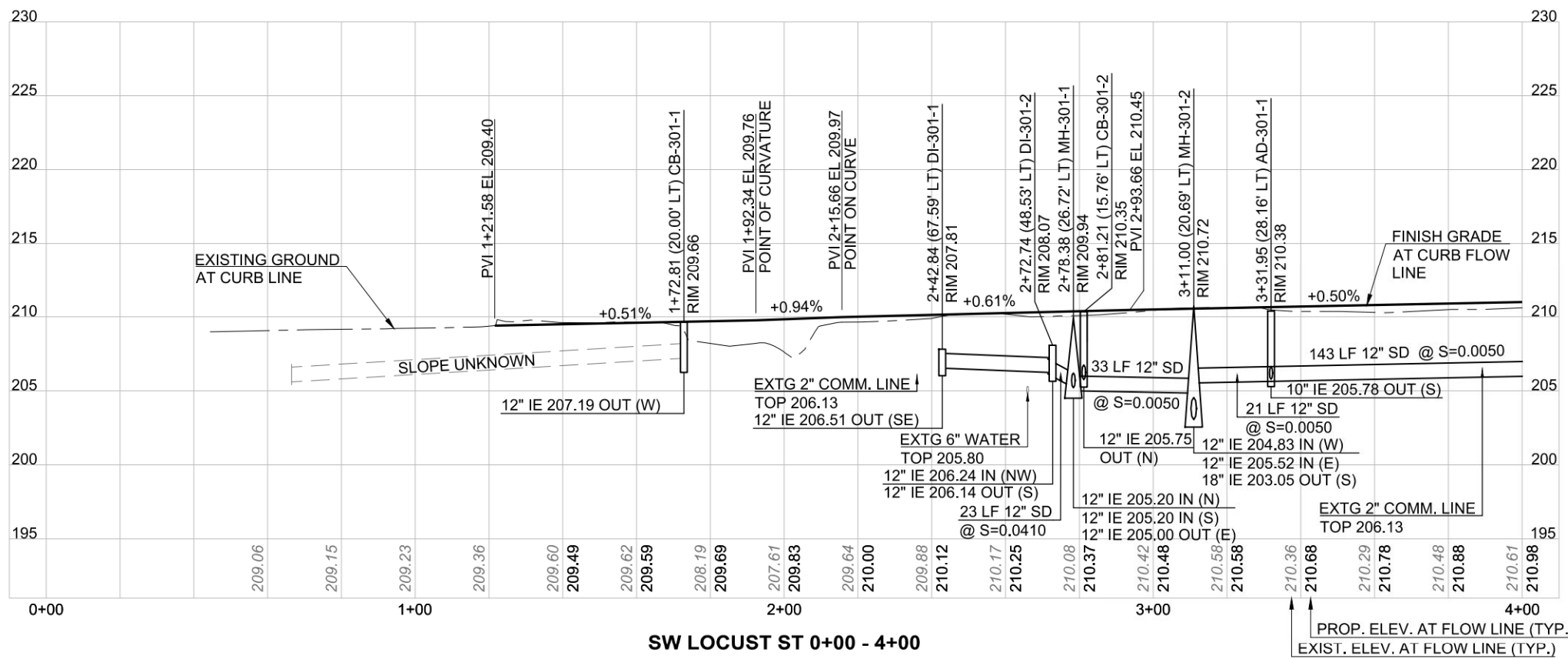


CURB RETURN DATA		
#	R	L
1	20.00	12.45
2	20.00	12.45
3	25.00	39.25
4	25.00	39.29



- ### CONSTRUCTION NOTES:
- CONSTRUCT STANDARD SIDEWALK (SEE COT STD. DWG. 215)
 - CONSTRUCT STANDARD MONOLITHIC CURB & GUTTER (SEE COT STD. DWG. 205)
 - CONSTRUCT MONOLITHIC SIDEWALK WITH WALL (SEE SHEET C-603 FOR DETAILS)
 - CONSTRUCT STANDARD RESIDENTIAL DRIVEWAY (SEE COT STD. DWG. 211) AND DRIVEWAY CONNECTION (SEE ODOT STD. DWG. RD715) - 2
 - CONSTRUCT DIRECTIONAL CURB RAMP - 2 (SEE SHEET C-401 FOR RAMP DETAILS)
 - CONSTRUCT PERPENDICULAR CURB RAMP (SEE SHEET C-402 FOR RAMP DETAILS)
 - TRANSITION AND MATCH EXISTING SIDEWALK (SEE ODOT STD. DWG. RD722)
 - INSTALL STORM PIPE (LENGTH AS NOTED) CONNECT WITH PREFABRICATED TEES AND FLEXIBLE COUPLERS (SEE COT STD. DWG. 180 FOR TRENCH BACKFILL REQUIREMENTS)
 - CONSTRUCT STANDARD 48" MANHOLE WITH CONCENTRIC CONE - 2 (SEE SHEET C-602 FOR DETAILS)
 - CONSTRUCT DITCH INLET - 2 (SEE CWS STD. DWG. 390)
 - CONSTRUCT CG-2 CATCH BASIN (SEE CWS STD. DWG. 300)
 - CONSTRUCT SINGLE UNIT CONCRETE CATCHBASIN STORMFILTER (SEE SHEET C-601 FOR DETAILS)
 - EXTEND AND CONNECT ROOF DRAIN INTO STORM STRUCTURE - 3 (SIZE AND LENGTH AS NOTED)
 - EXTEND PIPE AND CONNECT TO NEW MANHOLE (SIZE AND LENGTH AS NOTED) SEE COT STD. DWG. 180 FOR TRENCH BACKFILL REQUIREMENTS
 - CONSTRUCT TYPE II AREA DRAIN (SEE CWS STD. DWG. 380)
 - COMCAST TO RELOCATE COMMUNICATION RISERS BEHIND WALK AND ADJUST LINES OUT OF STORM MAIN
 - TVWD TO RELOCATE WATER METER BEHIND SIDEWALK - 2 (SEE TVWD DETAIL 601)
 - TVWD TO ADJUST WATER VALVE BOX TO FINISH GRADE (SEE TVWD DETAIL 402)
 - ADJUST GAS VALVE BOX TO FINISH GRADE. CONTRACTOR TO COORDINATE WORK WITH NW GAS
 - PROTECT UTILITY POLE
 - UTILITY PROVIDERS TO RELOCATE 3 GUY ANCHORS. CONTRACTOR TO COORDINATE WORK WITH PGE, LUMEN, AND COMCAST.
 - REGRADE DITCH TO DRAIN TO DITCH INLET (SEE SHEET C-401 FOR DETAILS)
 - REMOVE BOLLARDS - 2
 - REMOVE INLET - 2
 - REMOVE MANHOLE
 - REMOVE STORM PIPE AND BACKFILL TRENCH PER COT STD. DWG. 180
 - REMOVE AND RECONSTRUCT SPEED CUSHION PER DETAIL ON SHEET C-603
 - PROTECT SURVEY MONUMENT IN ACCORDANCE WITH OREGON REVISED STATUTES 209.150 AND 209.155
 - PRESERVE AND PROTECT TREE (COORDINATE WITH CITY BEFORE EXCAVATION)
 - INSTALL CLEANOUT (SEE CWS STD. DWG. 500) AND CONNECT ROOF DRAIN TO INLET
 - INSTALL RFRB - 2 (SEE SHEET C-701 FOR DETAILS)

PBS Engineering and Environmental Inc.
4412 S Cobble Avenue
Tigard, OR 97228
503.646.1839
pbsusa.com



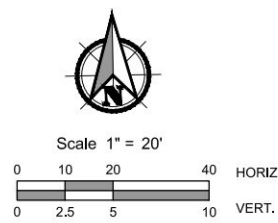
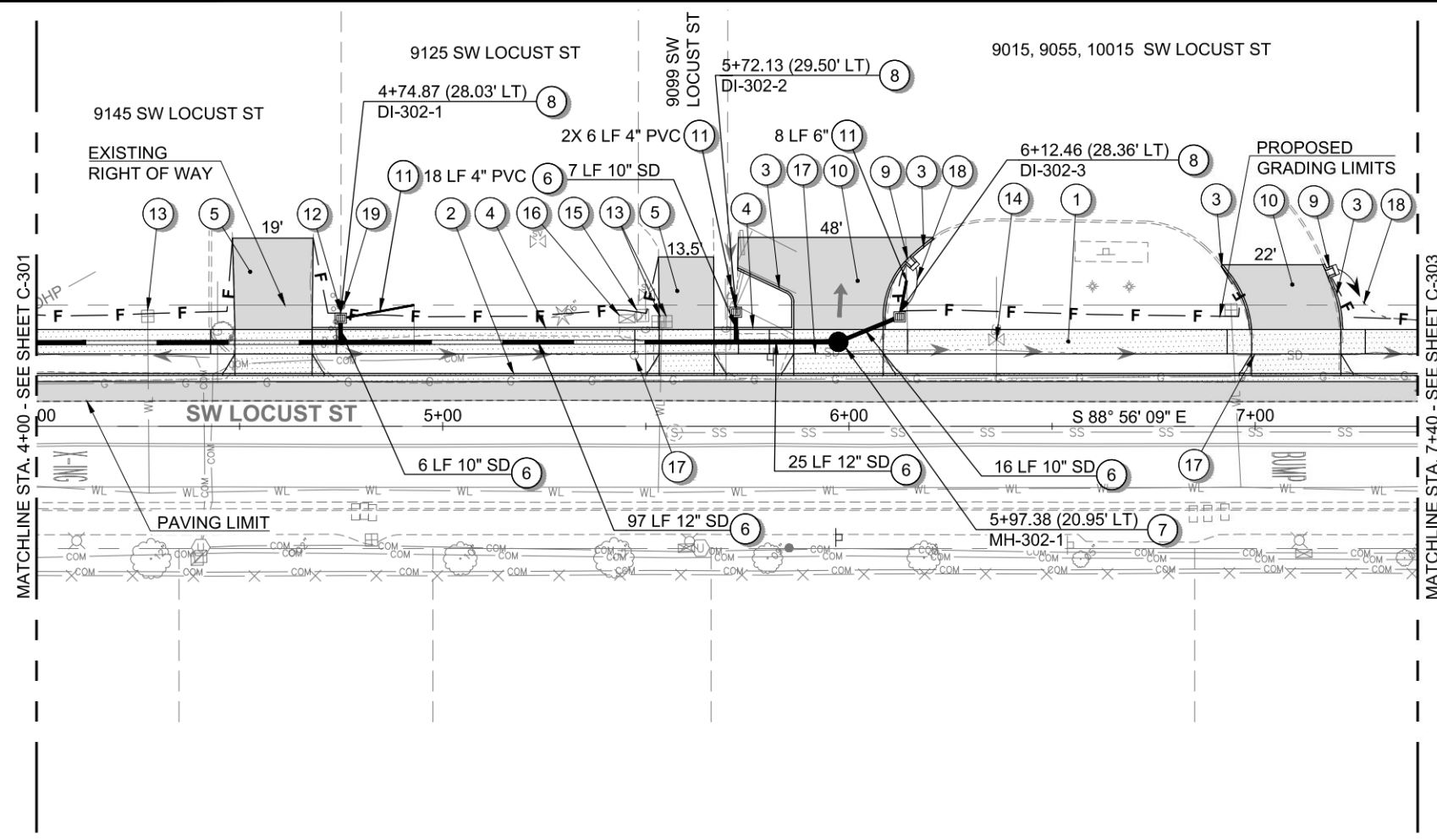
SRTS LOCUST ST. SIDEWALKS
CITY OF TIGARD
ROADWAY PLAN & PROFILE



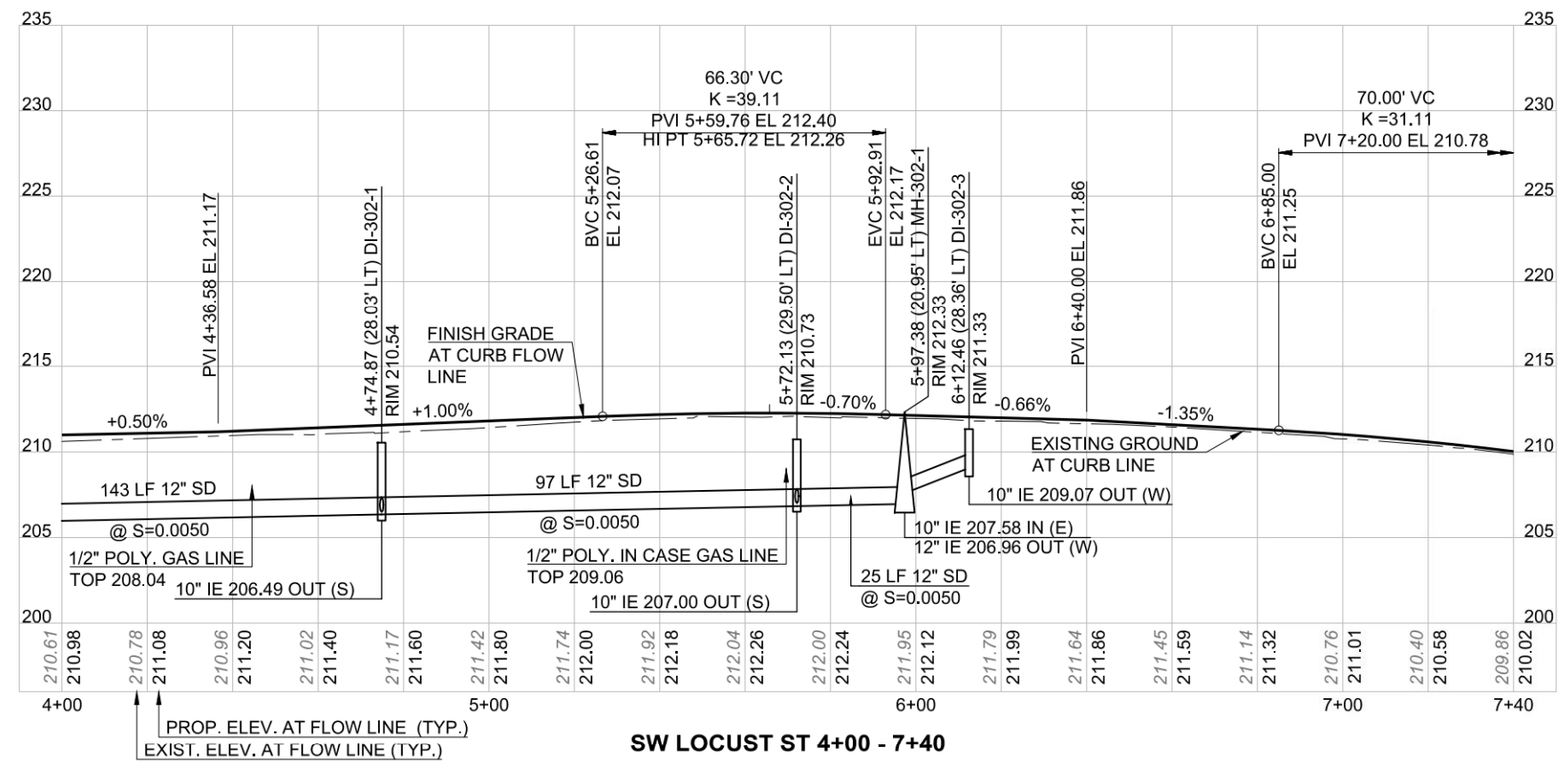
DESIGNED: PPG
CHECKED: KSR
FEBRUARY 2024 95073 (COT)
SHEET ID C-301
SHEET 9 OF 81

File name: I:\Projects\140001742721\42721\42721\000\CAD\Working\Sheets\95073\CDS\142721\000-C-301-C-205.dwg
 User: Phillip Grigorenko
 Layout: Tab: C-301
 CAD Plot Date/Time: 2/8/2024 4:33:51 PM

Full Size Sheet Format Is 22x34; If Printed Size Is Not 22x34, Then This Sheet Format Has Been Modified & Indicated Drawing Scale Is Not Accurate.



- ### CONSTRUCTION NOTES:
- 1 CONSTRUCT STANDARD SIDEWALK (SEE COT STD. DWG. 215)
 - 2 CONSTRUCT STANDARD MONOLITHIC CURB & GUTTER (SEE COT STD. DWG. 205)
 - 3 CONSTRUCT TYPE "A" CURB (SEE COT STD. DWG. 208)
 - 4 CONSTRUCT MONOLITHIC SIDEWALK WITH WALL BETWEEN DRIVEWAYS - 2 (SEE DETAIL ON SHEET C-603)
 - 5 CONSTRUCT STANDARD RESIDENTIAL DRIVEWAY (SEE COT STD. DWG. 211) AND DRIVEWAY CONNECTION (SEE ODOT STD. DWG. RD715) - 2
 - 6 INSTALL STORM PIPE (SIZE AND LENGTH AS NOTED) CONNECT WITH PREFABRICATED TEES AND FLEXIBLE COUPLERS (SEE COT STD. DWG. 180 FOR TRENCH BACKFILL REQUIREMENTS)
 - 7 CONSTRUCT STANDARD 48" MANHOLE WITH CONCENTRIC CONE (SEE SHEET C-602 FOR DETAILS)
 - 8 CONSTRUCT DITCH INLET - 3 (SEE CWS STD. DWG. 390)
 - 9 CONSTRUCT CURB CUT OUT WITHOUT GUTTER & TOP RAIL - 2 (SEE CWS STD. DWG. 752)
 - 10 CONSTRUCT STANDARD COMMERCIAL DRIVEWAY (SEE COT STD. DWG. 210) AND DRIVEWAY CONNECTION (SEE ODOT STD. DWG. RD715) - 2
 - 11 EXTEND AND CONNECT ROOF DRAIN INTO STORM STRUCTURE - 3 (SIZE AND LENGTH AS NOTED)
 - 12 REMOVE CHAINLINK FENCE, INSTALL NEW END POST AT RIGHT-OF-WAY, AND RECONNECT FENCE
 - 13 TVWD TO ADJUST WATER METER BOX TO FINISH GRADE - 3 (SEE TVWD DETAIL 402)
 - 14 ADJUST GAS VALVE BOX TO FINISH GRADE AND COORDINATE WORK WITH NW NATURAL GAS
 - 15 COMCAST TO ADJUST COMMUNICATION RISER TO FINISH GRADE AND VERIFY LINES ARE NOT IN CONFLICT WITH STORM MAIN
 - 16 PGE TO ADJUST OR RELOCATE POWER BOX TO FINISH GRADE. CONTRACTOR TO COORDINATE WORK WITH PGE.
 - 17 REMOVE STORM PIPE AND BACKFILL TRENCH PER COT STD. DWG. 180
 - 18 GRADE SHALLOW DITCH TO DRAIN TO DITCH INLET
 - 19 PROTECT SURVEY MONUMENT IN ACCORDANCE WITH OREGON REVISED STATUES 209.150 AND 209.155



SW LOCUST ST 4+00 - 7+40

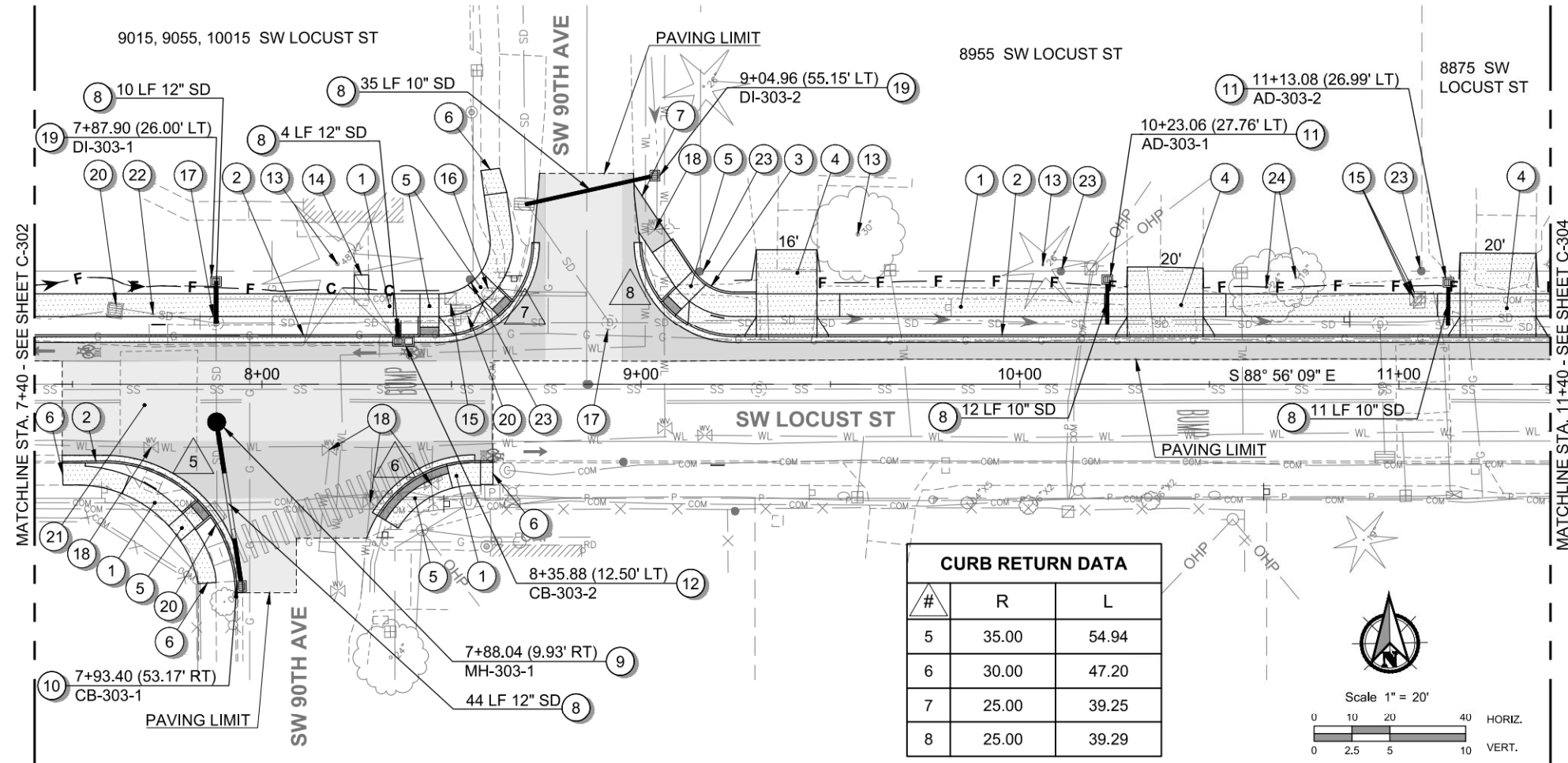
SRTS LOCUST ST. SIDEWALKS
 CITY OF TIGARD
 ROADWAY PLAN & PROFILE



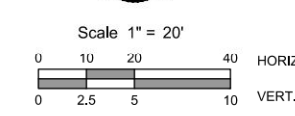
DESIGNED: PPG
CHECKED: KSR
FEBRUARY 2024 95073 (COT)
SHEET ID C-302
SHEET 10 OF 81

File name: I:\Projects\14000174272\14272-000\CAD\Working\Sheets\95\CD\14272.000-C-201-C-205.dwg User: Phillip Gligorov Layout: Tab: C-302 CAD Plot Date/Time: 2/8/2024 4:33:55 PM

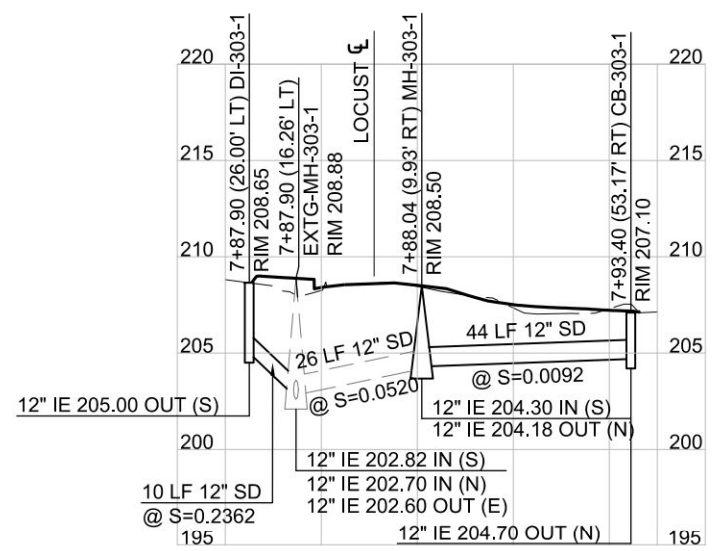
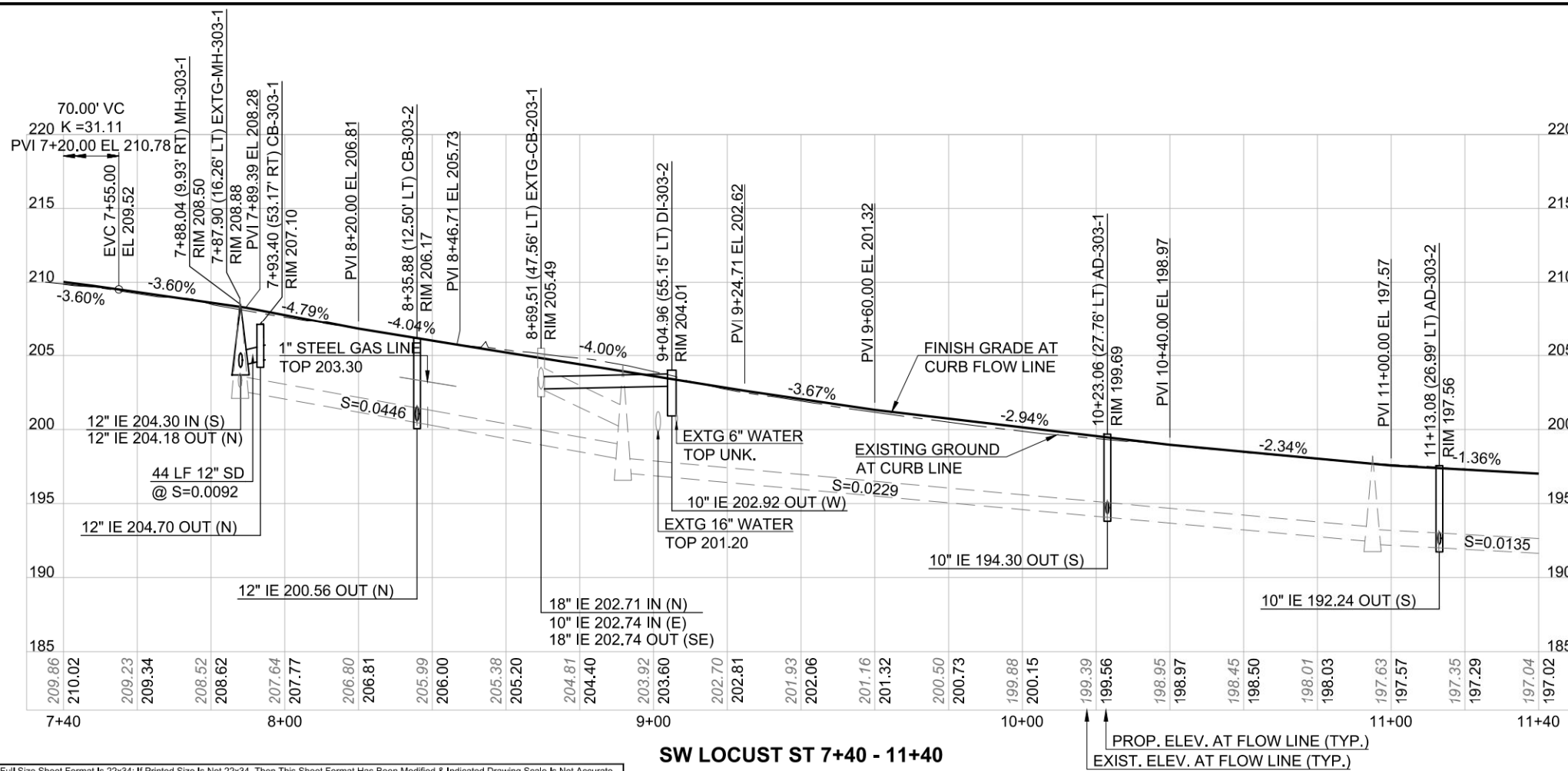
Full Size Sheet Format Is 22x34; If Printed Size Is Not 22x34, Then This Sheet Format Has Been Modified & Indicated Drawing Scale Is Not Accurate.



CURB RETURN DATA		
#	R	L
5	35.00	54.94
6	30.00	47.20
7	25.00	39.25
8	25.00	39.29



- ### CONSTRUCTION NOTES:
- CONSTRUCT STANDARD SIDEWALK (SEE COT STD. DWG. 215)
 - CONSTRUCT STANDARD MONOLITHIC CURB & GUTTER (SEE COT STD. DWG. 205)
 - CONSTRUCT TYPE "A" CURB (SEE COT STD. DWG. 208)
 - CONSTRUCT STANDARD RESIDENTIAL DRIVEWAY (SEE COT STD. DWG. 211) AND DRIVEWAY CONNECTION (SEE ODOT STD. DWG. RD715) - 3
 - CONSTRUCT CURB RAMP - 5 (SEE SHEET C-403 & C-404 FOR RAMP DETAILS)
 - TRANSITION AND MATCH EXISTING SIDEWALK (SEE ODOT STD. DWG. RD722)
 - TRANSITION AND TAPER SHOULDER (SEE ODOT STD. DWG. RD950)
 - INSTALL STORM PIPE (SIZE AND LENGTH AS NOTED) CONNECT WITH PREFABRICATED TEES AND FLEXIBLE COUPLERS (SEE COT STD. DWG. 180 FOR TRENCH BACKFILL REQUIREMENTS)
 - CONSTRUCT STANDARD 48" MANHOLE WITH CONCENTRIC CONE (SEE SHEET C-602 FOR DETAILS)
 - CONSTRUCT CG-2 CATCH BASIN (SEE CWS STD. DWG. 300)
 - CONSTRUCT TYPE II AREA DRAIN - 2 (SEE CWS STD. DWG. 380)
 - CONSTRUCT SINGLE UNIT CONCRETE CATCHBASIN STORMFILTER (SEE SHEET C-601 FOR DETAILS)
 - PRESERVE AND PROTECT TREE (COORDINATE WITH CITY BEFORE EXCAVATION). ADJUST SIDEWALK GRADE OVER ROOTS AS DIRECTED BY CITY.
 - REMOVE STEP AND CONSTRUCT SIDEWALK TO RECONNECT
 - COMCAST AND LUMEN TO RELOCATE COMMUNICATION RISERS BEHIND WALK - 4. CONTRACTOR TO COORDINATE WITH COMCAST FOR WORK.
 - RELOCATE SOLAR SPEED LIMIT SIGN (SEE SIGNING & STRIPING PLANS FOR DETAILS)
 - ADJUST STORM MANHOLE (MINOR) TO FINISH GRADE - 2
 - TVWD TO ADJUST WATER VALVE BOX TO FINISH GRADE - 5 (SEE TVWD DETAIL 402). PROTECT FIRE HYDRANT.
 - CONSTRUCT DITCH INLET - 2 (SEE CWS STD. DWG. 390)
 - REMOVE CATCH BASIN - 3
 - REMOVE SPEED CUSHION (SEE SHEET C-404 FOR GRADING DETAILS)
 - REMOVE STORM PIPE
 - PROTECT SURVEY MONUMENT IN ACCORDANCE WITH OREGON REVISED STATUES 209.150 AND 209.155
 - REMOVE TREE



File Name: I:\Projects\140001742721\24272-CAD\CAD\Working\Sheets\90\C-303\24272-200-C-201-C-205.dwg
 User: Philip Gligorov
 Layout Tab: C-303
 CAD Plot Date/Time: 2/8/2024 4:34:01 PM

SRTS LOCUST ST. SIDEWALKS
 CITY OF TIGARD
 ROADWAY PLAN & PROFILE

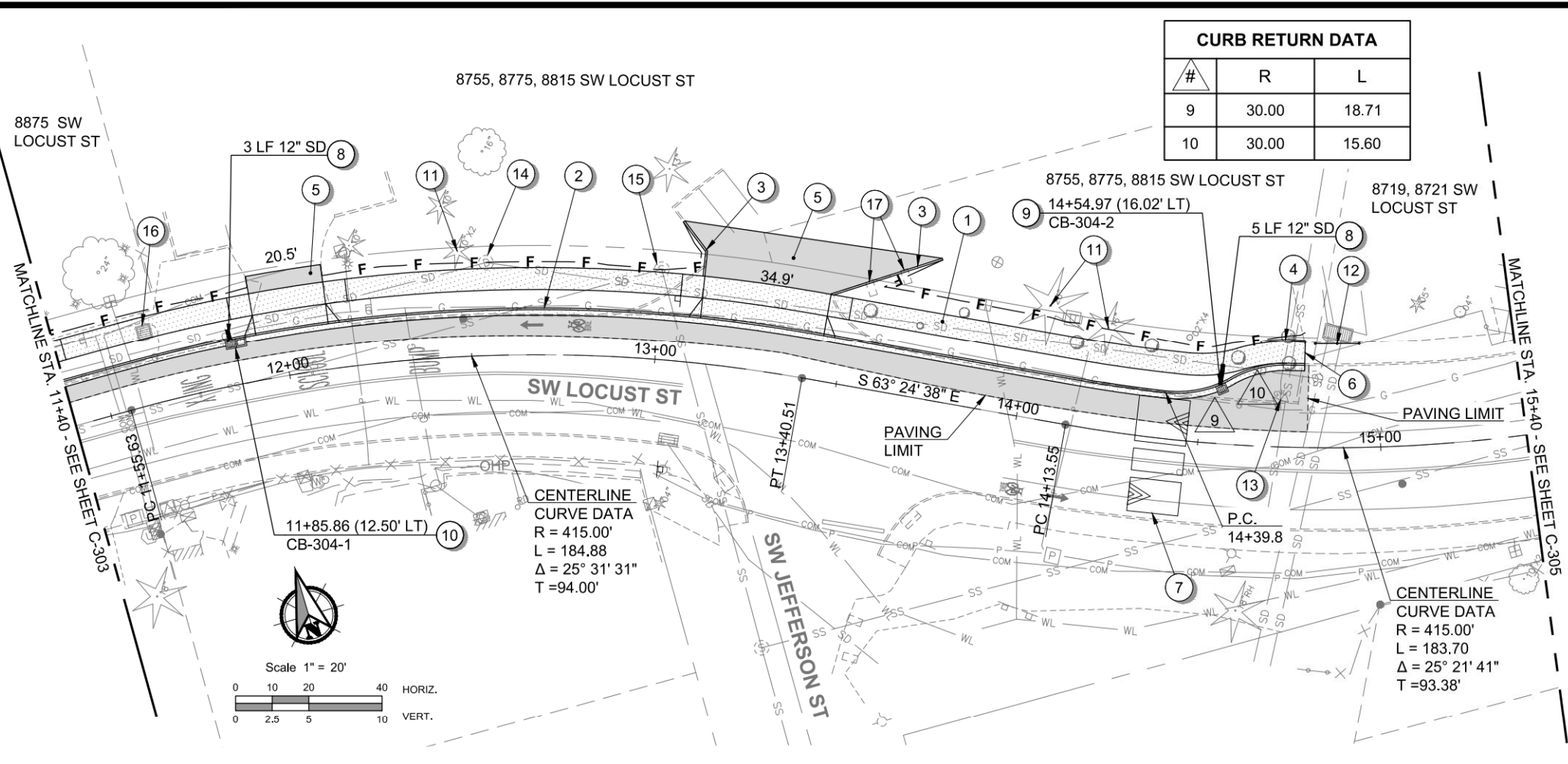


DESIGNED: PPG
 CHECKED: KSR
 FEBRUARY 2024
 95073 (COT)

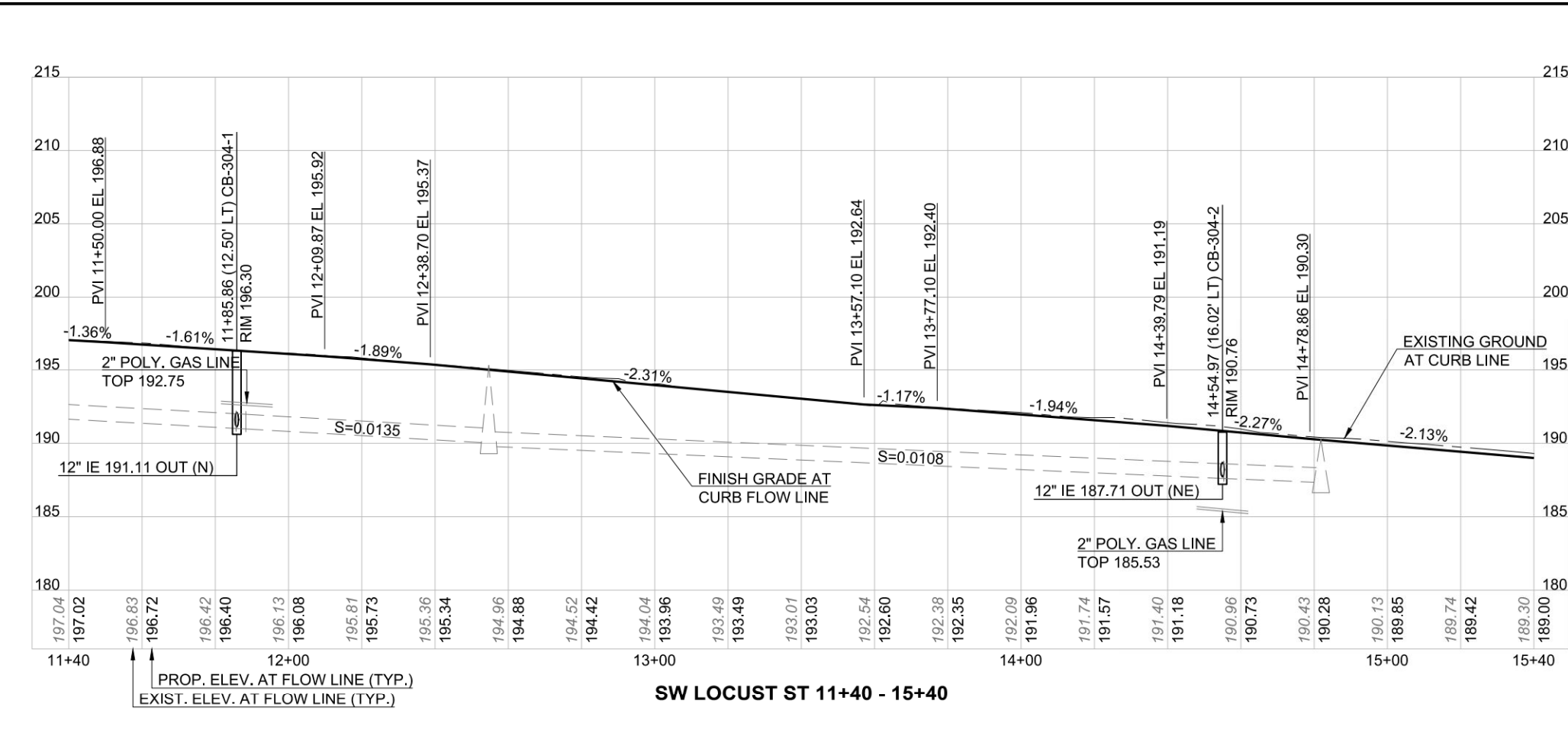
SHEET ID
C-303
 SHEET 11 OF 81




Full Size Sheet Format Is 22x34; If Printed Size Is Not 22x34, Then This Sheet Format Has Been Modified & Indicated Drawing Scale Is Not Accurate.




- ### CONSTRUCTION NOTES:
- 1 CONSTRUCT STANDARD SIDEWALK (SEE COT STD. DWG. 215)
 - 2 CONSTRUCT STANDARD MONOLITHIC CURB & GUTTER (SEE COT STD. DWG. 205)
 - 3 CONSTRUCT TYPE "A" CURB (SEE COT STD. DWG. 208)
 - 4 CONSTRUCT MONOLITHIC SIDEWALK WITH WALL L = 12". (SEE DETAIL ON SHEET C-603)
 - 5 CONSTRUCT STANDARD COMMERCIAL DRIVEWAY (SEE COT STD. DWG. 210) AND DRIVEWAY CONNECTION (SEE ODOT STD. DWG. RD715) - 2
 - 6 TRANSITION AND MATCH EXISTING SIDEWALK (SEE ODOT STD. DWG. RD722)
 - 7 CONSTRUCT SPEED CUSHION (SEE SHEET C-603 FOR DETAILS)
 - 8 INSTALL STORM PIPE (SIZE AND LENGTH AS NOTED). CONNECT WITH PREFABRICATED TEES AND FLEXIBLE COUPLERS (SEE COT STD. DWG. 180 FOR TRENCH BACKFILL REQUIREMENTS)
 - 9 CONSTRUCT CG-2 CATCH BASIN (SEE CWS STD. DWG. 300)
 - 10 CONSTRUCT SINGLE UNIT CONCRETE CATCHBASIN STORMFILTER (SEE SHEET C-601 FOR DETAILS)
 - 11 PRESERVE AND PROTECT TREE (COORDINATE WITH CITY BEFORE EXCAVATION). ADJUST SIDEWALK GRADE OVER ROOTS AS DIRECTED BY CITY.
 - 12 INSTALL 12" TWO RAIL HANDRAIL (SEE ODOT STD. DWG. RD770 & RD771)
 - 13 ADJUST GAS VALVE BOX TO FINISH GRADE. CONTRACTOR TO COORDINATE WORK WITH NW NATURAL GAS
 - 14 PROTECT STORM MANHOLE
 - 15 PROTECT SANITARY MANHOLE. FIELD ADJUST SIDEWALK TO AVOID RIM/FRAME.
 - 16 REMOVE DITCH INLET
 - 17 PRESERVE AND PROTECT MAILBOX



SRTS LOCUST ST. SIDEWALKS
CITY OF TIGARD
ROADWAY PLAN & PROFILE



Know what's below.
Call before you dig.



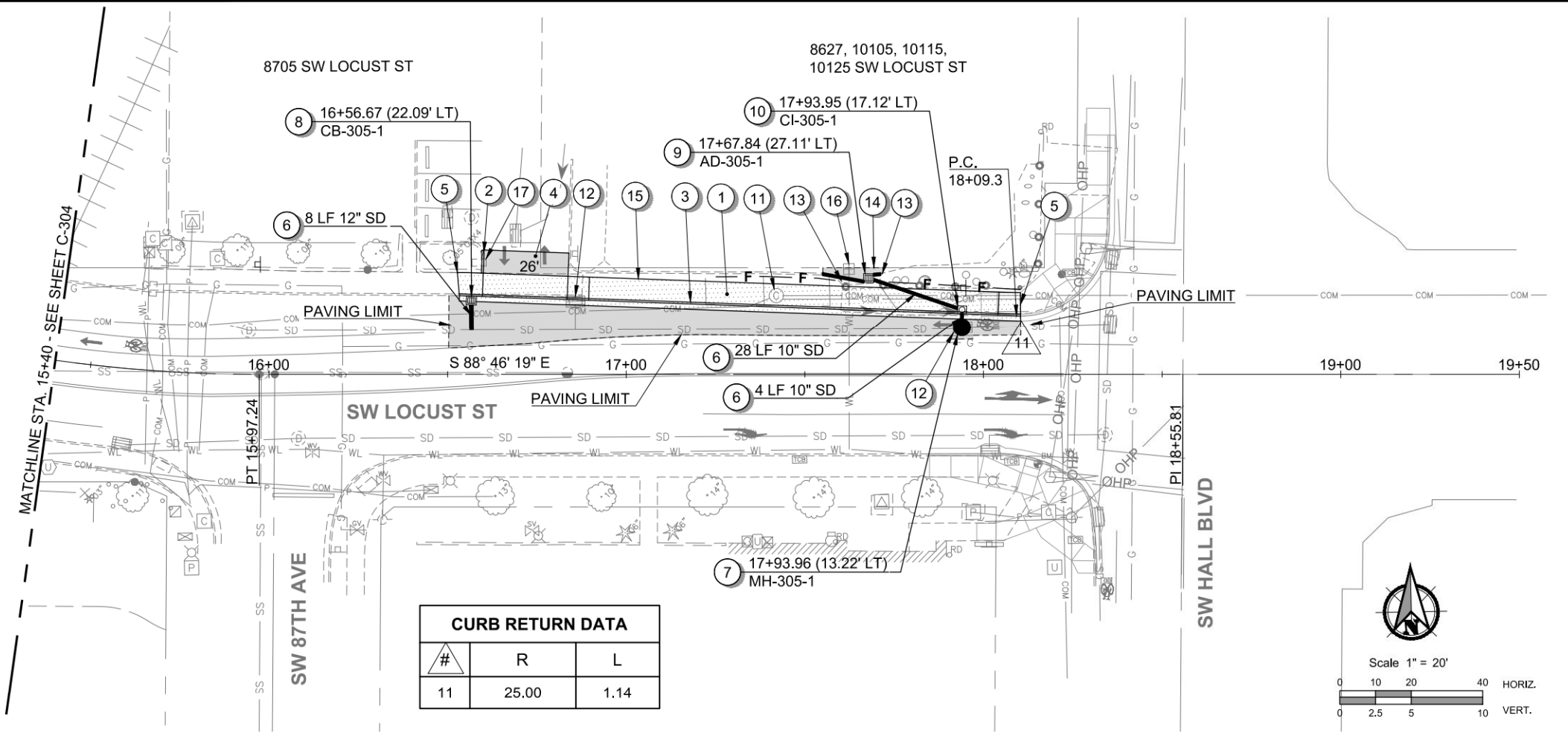
REGISTERED PROFESSIONAL ENGINEER
48570PE
DIGITALLY SIGNED
OREGON
JAN. 15 2002
KENNETH S. REIMS
EXPIRES: 12/31/2024

DESIGNED: PPG
CHECKED: KSR
FEBRUARY 2024 95073 (COT)
SHEET ID C-304
SHEET 12 OF 81

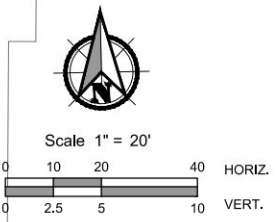
File name: I:\Projects\14000174272\14272-000\Civil\CAD\Working\Sheets\95\CD\14272\200-C-201-C-304.dwg User: Phillip Chigrov CAD Plot Date/Time: 2/8/2024 4:34:05 PM
 Layout Tab: C-304 Scale: 1" = 20' Plot Size: 24" x 36" Plot Scale: 1" = 20'

Full Size Sheet Format Is 22x34; If Printed Size Is Not 22x34, Then This Sheet Format Has Been Modified & Indicated Drawing Scale Is Not Accurate.

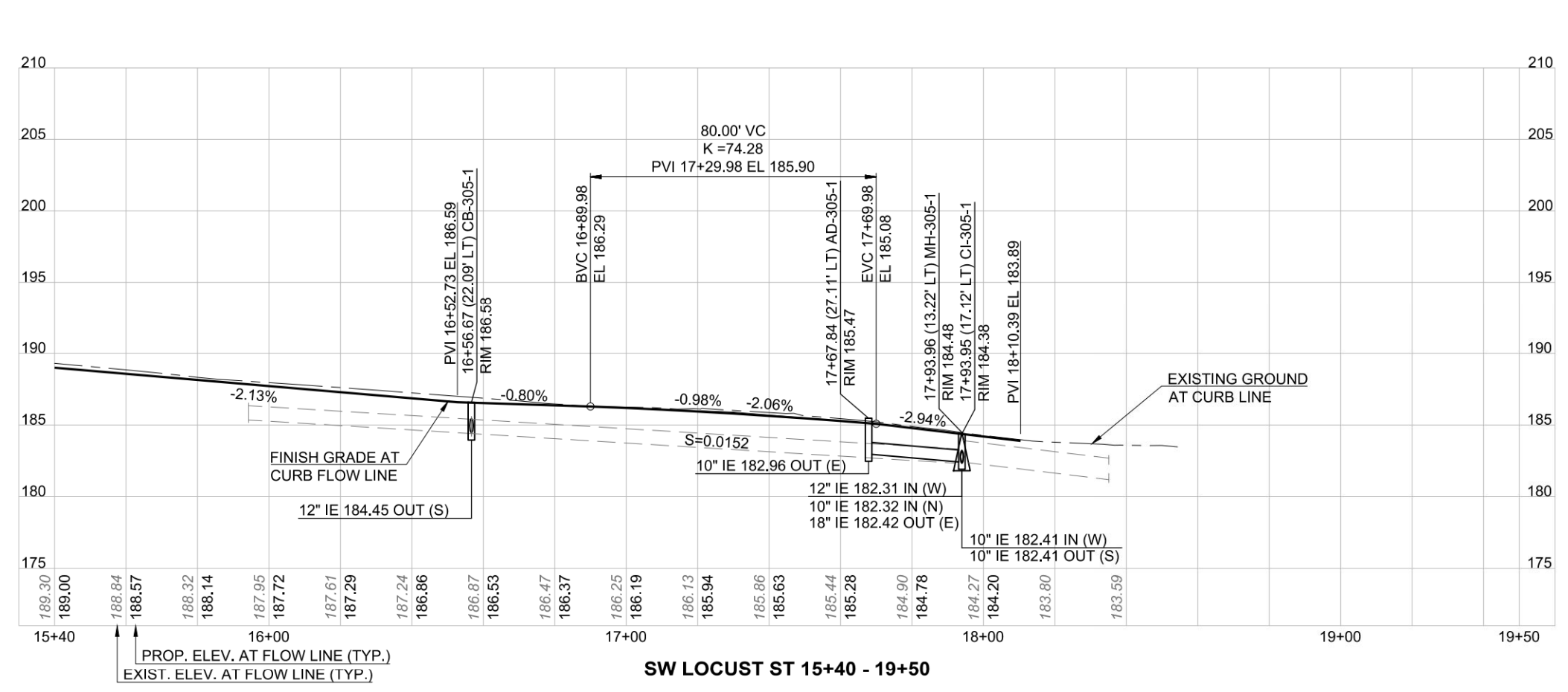
File Name: I:\Projects\14000174272\14272-000\CAD\Working\Sheets\90\CD\14272\200-C-201-C-305.dwg
 User: Philip Chigrov
 Layout Tab: C-305
 CAD Plot Date/Time: 2/8/2024 4:34:10 PM



CURB RETURN DATA		
#	R	L
11	25.00	1.14



- ### CONSTRUCTION NOTES:
- 1 CONSTRUCT STANDARD SIDEWALK (SEE COT STD. DWG. 215)
 - 2 CONSTRUCT TYPE "A" CURB (SEE COT STD. DWG. 208)
 - 3 CONSTRUCT STANDARD MONOLITHIC CURB & GUTTER (SEE COT STD. DWG. 205)
 - 4 CONSTRUCT STANDARD COMMERCIAL DRIVEWAY (SEE COT STD. DWG. 210) AND DRIVEWAY CONNECTION (SEE ODOT STD. DWG. RD715)
 - 5 TRANSITION AND MATCH EXISTING SIDEWALK (SEE ODOT STD. DWG. RD722)
 - 6 INSTALL STORM PIPE. CONNECT TO MAINLINE WITH PREFABRICATED TEES AND FLEXIBLE COUPLERS (SIZE AND LENGTH AS NOTED) (SEE COT STD. DWG. 180 FOR TRENCH BACKFILL REQUIREMENTS)
 - 7 CONSTRUCT STANDARD 48" MANHOLE WITH CONCENTRIC CONE (SEE SHEET C-602 FOR DETAILS). CONNECT EXISTING STORM PIPES.
 - 8 CONSTRUCT CG-2 CATCH BASIN (SEE CWS STD. DWG. 300)
 - 9 CONSTRUCT AREA DRAIN TYPE II. INSERT 10" TEE INSIDE STRUCTURE FOR STORM WATER TREATMENT (SEE CWS STD. DWG. 380)
 - 10 CONSTRUCT CG-30 INLET CATCH BASIN (SEE CWS STD. DWG. 330)
 - 11 LUMEN TO ADJUST COMMUNICATION MANHOLE TO FINISH GRADE (CONTRACTOR TO COORDINATE WORK WITH CENTURYLINK)
 - 12 REMOVE CATCH BASIN AND INSTALL PERMANENT PLUG (1) - 2
 - 13 CONSTRUCT PCC DRAINAGE CURB (SEE ODOT STD. DWG. 701)
 - 14 REPLACE ASPHALT PAVEMENT TO PROVIDE DRAINAGE TO NEW INLET (SEE SHEET C-507 FOR DETAILS)
 - 15 PROTECT EXTRUDED CURB
 - 16 PRESERVE AND PROTECT WATER METER
 - 17 PRESERVE AND PROTECT MAILBOX



PBS Engineering and
 Environmental Inc.
 4412 S Corbett Avenue
 Portland, OR 97239
 503.246.1839
 pbsusa.com



SRTS LOCUST ST. SIDEWALKS
 CITY OF TIGARD
 ROADWAY PLAN & PROFILE



DESIGNED: PPG
CHECKED: KSR
FEBRUARY 2024 95073 (COT)
SHEET ID C-305
SHEET 13 OF 81

Full Size Sheet Format Is 22x34; If Printed Size Is Not 22x34, Then This Sheet Format Has Been Modified & Indicated Drawing Scale Is Not Accurate.